



# Light Insulated Service Door

Model LIS100

The LIS100 provides the same thermal efficiency and sound proofing as our HIS100 while still keeping hurricane zone approval but applied to smaller openings.



- Light Duty Insulated Rolling Door
- Two Layers of Steel
- Enhanced Security
- Thermal Protection
- Air Filtration
- Sound Reduction
- High Velocity Hurricane Zone Approval
- Up to 16' Wide and 30' High
- Variety of Colors and Finishes
- Ideal for Thermal and Sound Control

## Tradition with New Ideas

*Manufacturing Rolling Doors since 1946*



## LIS100 | Specifications

<b>Max Width:</b>	16'
<b>Max Height:</b>	30'
<b>Slat Type:</b>	Flat Insulated with Windlocks
<b>Insulation R-Value:</b>	8.0
<b>Curtain Gauge:</b>	24 ga. (Front) / 24 ga. (Back)
<b>Curtain Material:</b>	Steel
<b>Curtain Finish:</b>	Galvanized (G90)
<b>Approval:</b>	FBC #: FL23801
<b>Wind Load:</b>	+70.0/-70.0 psf
<b>Bottom Bar:</b>	Structural Steel Angle with Astragal
<b>Weather Stripping:</b>	Bottom Bar and Interior or Exterior Guide
<b>Locking:</b>	Bottom Bar Slide Bolts
<b>Hood:</b>	Hexagonal 24 ga. Galvanized Steel (G90)
<b>Operation:</b>	Manual Chain Hoist
<b>Guides:</b>	Roll-formed Galvanized Steel
<b>Springs:</b>	Min. 10,000 Cycles

## LIS100 | Options

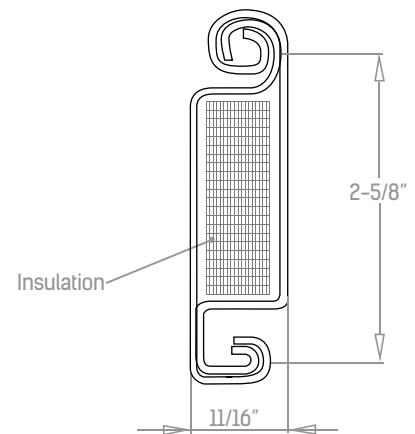
- Slats: 18 ga., 20 ga., 22 ga
- Prepainted / Powder Coated Finishes
- Hood: Round 24 ga. Galvanized Steel (G90)
- Motor Operation or Manual Push Up
- Guides: Structural Steel Angles / Aluminum
- Interior/Exterior Weather Sealed Guides or Lintel Steel
- Double Angle Bottom Bar
- Cylinder Locking Mechanism
- Counterbalance Life Cycle (50,000 / 100,000 / 300,000)
- Hot Dip Galvanizing on Steel Components

## LIS100 | Application Guide

	LIS100
Agricultural Buildings	👉
Cafeteria / Concessions	👉
Car Wash / Corrosive Environments	👉
Commercial / Multi-Tenant	👉
Fire Station / Ambulance	👉
High Security	👉
Large Opening Size	
Mining, Pulp & Paper	👉
Service Station	👉
Shopping Mall/Retail	👉
Thermal Environments	👉
Transit Facility/Truck Terminal	👉
Underground Parking	
Non-insulated Storage	
Warehouse/Manufacturing	👉

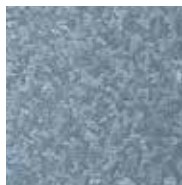
👉 = Good    👉 = Better    👉 = Best

## LIS100 | Slat Profile



## LIS100 | Finishes\*

Galvanized (G90)



Standard

Prepainted White



Optional

Prepainted Grey



Optional

Powder Coating



Optional

\*Actual colors may vary from brochure due to fluctuation in the printing process or your computer's monitor resolution. Always request a color sample for accurate color matching.

**Contact Us:** [info@rollingdoors.com](mailto:info@rollingdoors.com) : +(1) 305.885.7590

: 7214 NW 78th Terrace, Medley, FL 33166

[rollingdoors.com](http://rollingdoors.com)

